

Accurate, Reliable, User-friendly, Low-maintenance, Cost-effective

Converting Dispense Systems

Solvent-borne and solventless laminating adhesives

- Precision flow control
- Variable mix ratios to 100:1
- Ratio, material tracking and reporting
- Simple touch screen controls
- Convenient, automated ratio-check
- Easy control integration
- Three component metering with dual-formulation versatility
- High output



Converting Dispense Systems



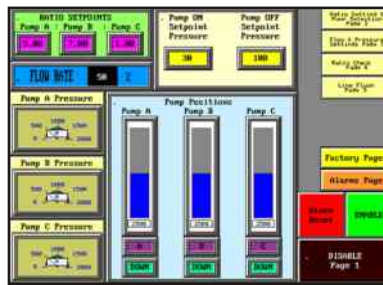
Fluidic Systems' PK2-CD and PK3-CDEX offer the accuracy and low-maintenance reliability required by the converting industry for automatic processing of solventless and solvent-borne laminating adhesives. The variable ratio systems are designed for mix ratios from 1:1 to 100:1 (+/- 1% accuracy), viscosities from 1 cps to non-flow compounds, and flow rates up to 5,700 cc/minute. Features include intuitive touch screen controls, convenient ratio check station, ratio tracking, material tracking, and reporting options.

The PK3-CDEX is a new product specifically developed for processing solvent-borne adhesives. The system is designed to operate in hazardous zones, meter co-reactants down to 1%, and provide high material outputs.

New Dispensing Technology

Fluidic's technology is based on patented Linear Displacement Pumps (LDPs) and PLC control system. Precision motion control (similar to robotic controls and drives), powered by closed-loop servo motors with ball screw drives and coupled to the positive displacement LDPs, results in a precision metering system with a wide range of dispensing capabilities.

Fluidic's patented LDP (US 6,398,514 B1) is a volumetrically accurate double-acting continuous flow rod displacement pump. LDPs have the advantage of no material slip (bypass) and are unaffected by viscosity variations. Gear meter pumps have inherent slip factors, while piston and progressive cavity pumps wear resulting in material slip. Slip factors adversely affect metering accuracy. LDPs have no slip factor regardless of pressure. And unlike gear meter pumps, LDPs are unaffected by batch-to-batch and temperature-induced viscosity variations that require calibration adjustments. In addition, LDPs fill and dispense from a single port facilitated by Fluidic's patent-pending XV2 cross-over valve. This design eliminates troublesome check valves.



(US Patent 6,398,514B1)

Specifications

Mix Ratio Range.....	1:1 to 100:1*
Accuracy	+/- 1%
Flow Rates.....	10 cc/min to 5,700 cc/min*
Working Pressure.....	3500 psi*
Fluid Viscosities	1 cps to non-flow
Wetted Materials	303, 316 SS, TFE, PE
Cabinet Dimensions.....	24" x 27" x 57"
Air Requirements.....	25-50 CFM @ 80-120 psi
Electrical requirements (single phase).....	120 VAC, 20-30 amps
	30 KV Power Surge/Filter Suppressor
Standards†	Class I, Division 2 Groups C & D
	Class I, Division 1, Zone 0 & 1 Hazardous Locations (optional)

† Manufacturing Standards: UL/CSA Test Certification in process
* configured to application requirements

