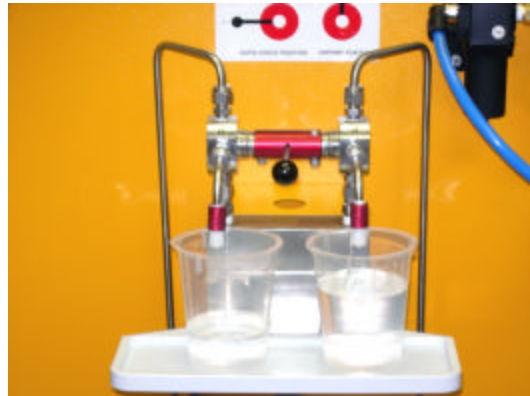


## TWO COMPONENT DISPENSING SYSTEM SOLVENTLESS LAMINATING ADHESIVES

Fluidic Systems PK2CD (Converting Dispense) machine is based on Fluidic's patented Linear Displacement Pumps (LDPs) and PLC control system. Dispensing Parameters: Variable Mix Ratios from 1:1 to 100:1 (+/- 1%), Viscosity Range from 1cps to non-flow, and Flow Rates up to 6,000 cc/min. (1.5 gal/min.). Features include Touch Screen OIT display, Ratio Check Station, Ratio Tracking, and Ethernet Statistical Process Reporting (SPR) for logging production outputs. The control system is easily integrated with lamination machines. [www.fluidicsystems.com](http://www.fluidicsystems.com).



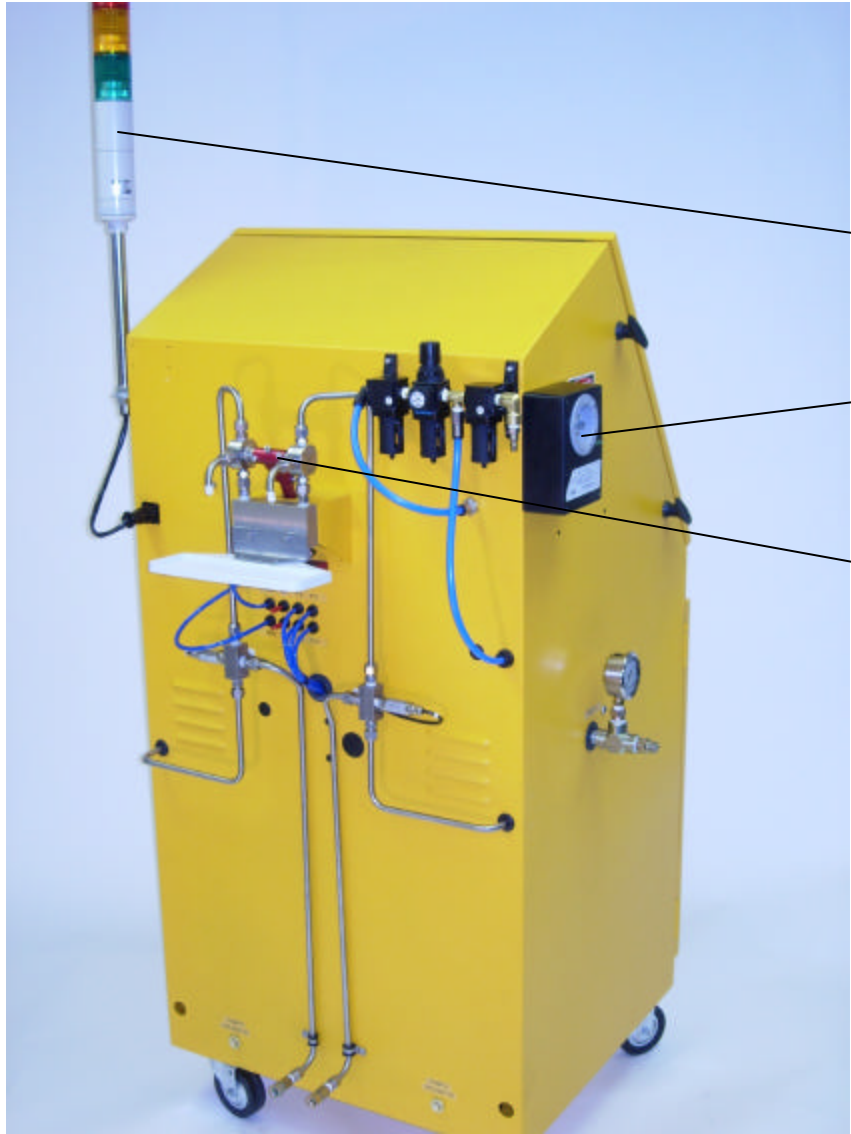
Fluidic PK2CD converting dispense machine for Solventless Laminating Adhesives



Ratio Check Station



- Linear Displacement Pumps (LDP's)
- Positive Displacement
- Servo Driven
- Continuous Flow
- No Calibration Adjustments
- No Slip Factor
- 1% Ratio Accuracy
- Fluidic Patent No. US 6,398,514 B1



# FLUIDIC SYSTEMS PK2CD

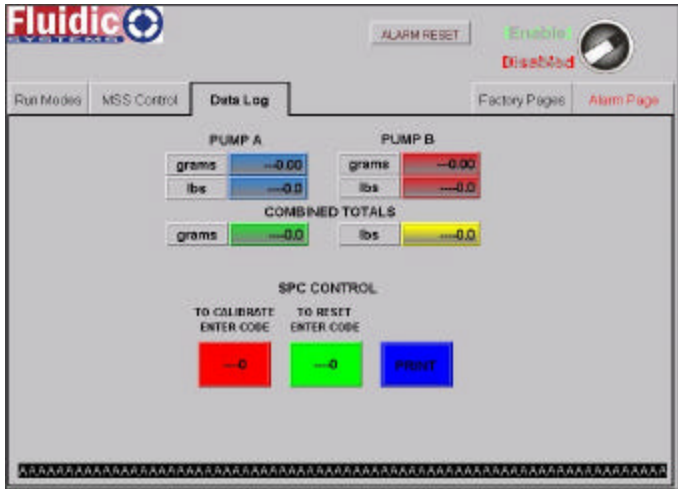
MODE STATUS LIGHT TOWER

POWER SURGE PROTECTOR

AUTOMATIC RATIO CHECK MODULE



USB PRINTER PORT  
Ethernet Ready



STATISTICAL PROCESS REPORTING  
10 inch Color Touch Screen